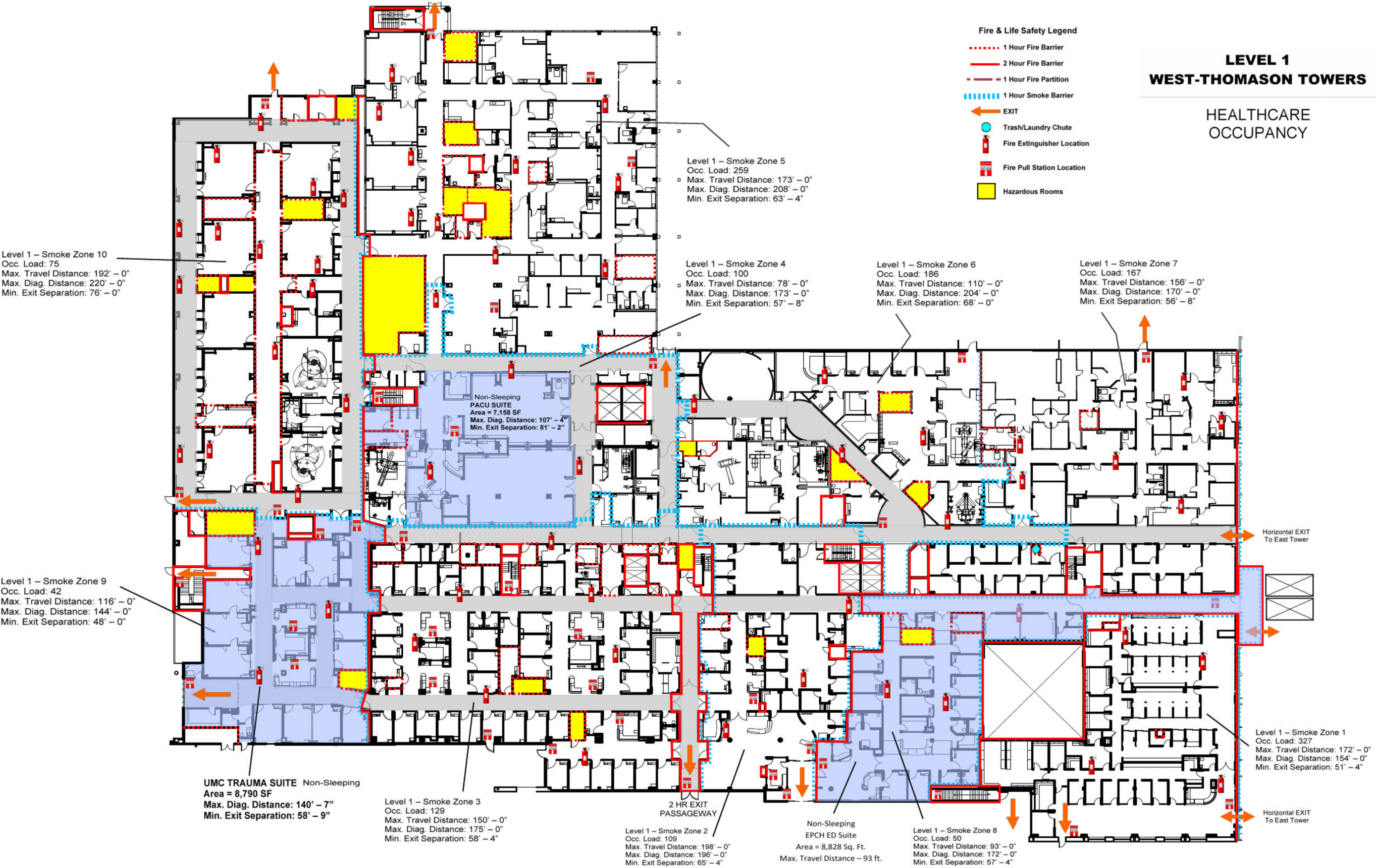


**LEVEL 1
WEST-THOMASON TOWERS**

**HEALTHCARE
OCCUPANCY**

Fire & Life Safety Legend

- - - - - 1 Hour Fire Barrier
- 2 Hour Fire Barrier
- - - - - 1 Hour Fire Partition
- - - - - 1 Hour Smoke Barrier
- EXIT
- Trash/Laundry Chute
- 🔥 Fire Extinguisher Location
- 🚒 Fire Pull Station Location
- Hazardous Rooms



Level 1 – Smoke Zone 10
Occ. Load: 75
Max. Travel Distance: 192' – 0"
Max. Diag. Distance: 220' – 0"
Min. Exit Separation: 76' – 0"

Level 1 – Smoke Zone 5
Occ. Load: 259
Max. Travel Distance: 173' – 0"
Max. Diag. Distance: 208' – 0"
Min. Exit Separation: 63' – 4"

Level 1 – Smoke Zone 4
Occ. Load: 100
Max. Travel Distance: 78' – 0"
Max. Diag. Distance: 173' – 0"
Min. Exit Separation: 57' – 8"

Level 1 – Smoke Zone 6
Occ. Load: 186
Max. Travel Distance: 110' – 0"
Max. Diag. Distance: 204' – 0"
Min. Exit Separation: 68' – 0"

Level 1 – Smoke Zone 7
Occ. Load: 167
Max. Travel Distance: 156' – 0"
Max. Diag. Distance: 170' – 0"
Min. Exit Separation: 56' – 8"

Non-Sleeping
PACU SUITE
Area = 7,158 SF
Max. Diag. Distance: 107' – 4"
Min. Exit Separation: 81' – 2"

Level 1 – Smoke Zone 9
Occ. Load: 42
Max. Travel Distance: 116' – 0"
Max. Diag. Distance: 144' – 0"
Min. Exit Separation: 48' – 0"

UMC TRAUMA SUITE Non-Sleeping
Area = 8,790 SF
Max. Diag. Distance: 140' – 7"
Min. Exit Separation: 58' – 9"

Level 1 – Smoke Zone 3
Occ. Load: 129
Max. Travel Distance: 150' – 0"
Max. Diag. Distance: 175' – 0"
Min. Exit Separation: 58' – 4"

Level 1 – Smoke Zone 2
Occ. Load: 109
Max. Travel Distance: 198' – 0"
Max. Diag. Distance: 196' – 0"
Min. Exit Separation: 65' – 4"

Non-Sleeping
EPCH ED Suite
Area = 8,828 Sq. Ft.
Max. Travel Distance – 93 ft.

Level 1 – Smoke Zone 8
Occ. Load: 50
Max. Travel Distance: 93' – 0"
Max. Diag. Distance: 172' – 0"
Min. Exit Separation: 57' – 4"

Level 1 – Smoke Zone 1
Occ. Load: 327
Max. Travel Distance: 172' – 0"
Max. Diag. Distance: 154' – 0"
Min. Exit Separation: 51' – 4"

Horizontal EXIT
To East Tower

Horizontal EXIT
To East Tower

2 HR EXIT
PASSAGEWAY